

MATERIALS AND SPECIFICATIONS ARE SUBJECT TO CHANGE WITHOUT PRIOR NOTICE.  
FEATURED MACHINES IN PHOTOS MAY INCLUDE ADDITIONAL EQUIPMENT.  
COPYRIGHT 2022 © SANY ALL RIGHTS RESERVED.



📍 SANY Industrial Park, Gaolan Port Economic and Development Zone,  
Zhuhai, Guangdong, China

☎ Tel +86-756-7266963    🧑 Service +86-4008-87-8318

Designed and produced by SANY Marine Marketing Company ©



2022-SMH

# SANY MATERIAL HANDLER



# SANY Material Handler

SANY Material Handler has been widely used in steel plants, ports, stacking yards and warehouses to load or stack steel scrap and bulk cargoes as well as to pick up, hoist or cut materials. SANY Material Handler has been applied multiple in-house developed technologies in the areas of energy saving and control, hydraulic linkage, anti-rollover protection, malfunction automatic detection and data real-time display to backup the world leading performance.

**Faster Operation**

Equipped with Kawasaki large displacement main pump, high efficiency main valve and reducer, can realize fast operation.

**Stronger Power**

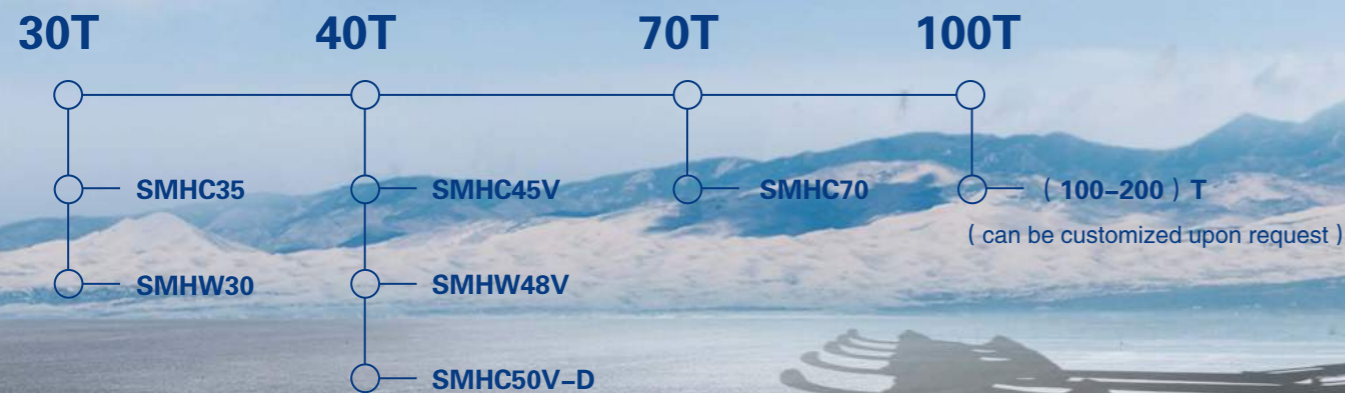
High torque engine and motor, adopted mature chassis, reliable structure.

**Wider Application**

Excellent load capacity and optional boom length, adapt to a wider range of operating conditions.

**More Savings**

Controller has positive flow hydraulic system. Engine match with main pump perfectly and energy consumption reduced by 10%.

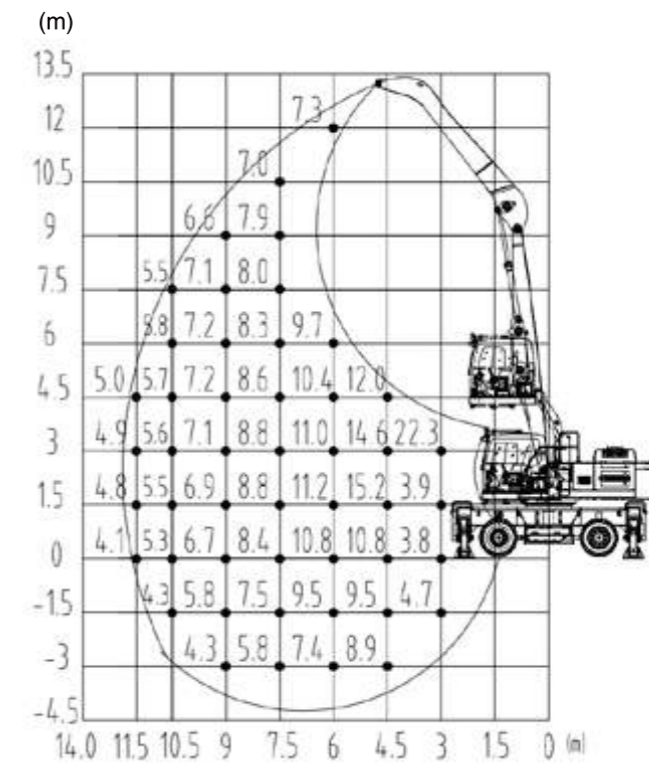




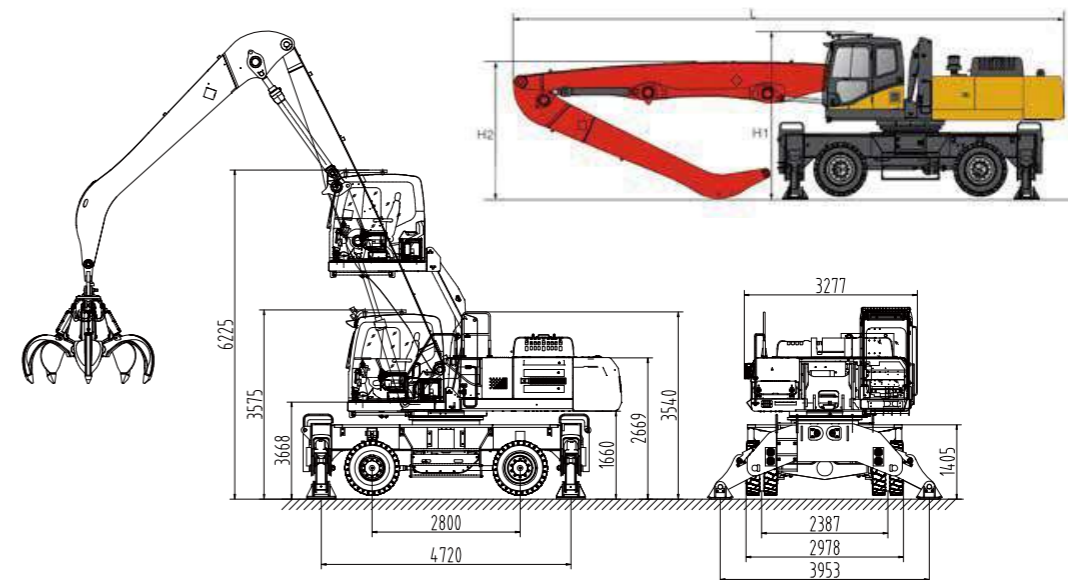
## CONFIGURATION PARAMETER

Power system	Engine	Model	Mitsubishi D06FRC-TAA
		Power	147kW/2100rpm
		Torque	750Nm/1350rpm
		Emission	CHN III
		Oil tank	465L
Chassis	Tread width	2387mm	
	Wheelbase	2800mm	
	Vertical span	4720mm	
	Horizontal span	3953mm	
	Turning radius	8600mm	
	Maximum travel speed	20km/h	
Hydraulic system	Control type	Electronic control positive flow system	
	Main pump	Model	Rexroth A28VO130E71CPB/10DRVG3R12F1B2S40-0
		Rated flow	2 x 260L/min
	Main valve	Kawasaki KMX15RB/B45606-EV1	
	Reducer	Sauter GS14D20C.0	
	Movable boom cylinder	Hengli JSY26.5-DB	
	Stick cylinder	Zhongxing ZX200.3.1B	
	Maximum system pressure	32MPa	
	Hydraulic circuit	230L	
	Slewing mechanism	Slewing bearing	Sauter SSF1405/40CWH II
Maximum slewing speed		8rpm	
Operation Cabin	Lifting height	2650mm	
Operation basic parameter	Boom specification	Movable boom:6.8m	
		Stick: 5.6m	
	Maximum working radius	11.5m	
	Maximum working height	12m	
	Maximum working depth	-3m	
	Theoretical load on maximum radius point(including grab)	5t	

## WORKING RANGE



## THE DIAGRAM OF DIMENSION



	The length of movable hinge point	The length of stick point	L	H1	H2
Boom combination(standard)	6.8m	5.6m	5.85m	3.61m	3m

# SMHW30

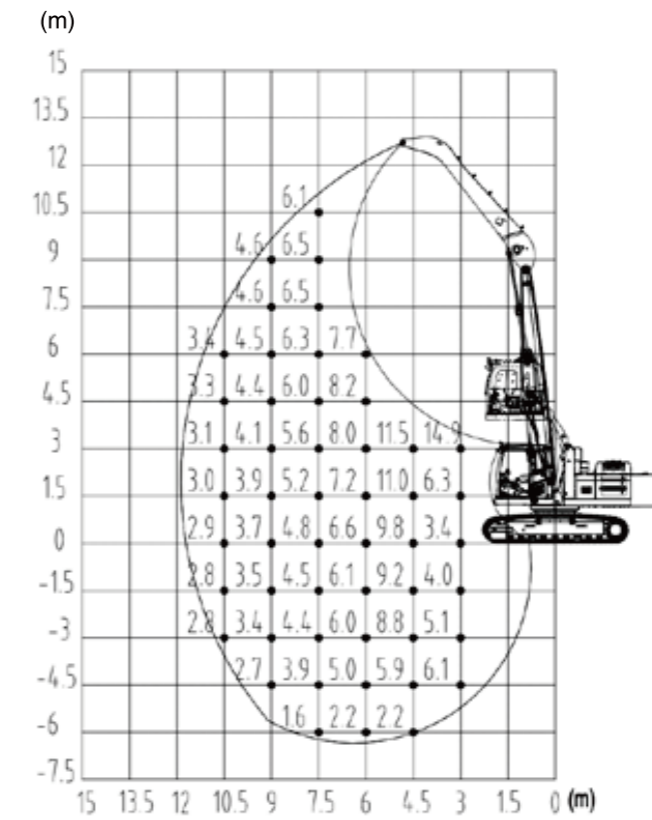
SANY 30t Material Handling machine mainly apply to various bulk cargo grab operation. The whole machine is light and flexible, stable, efficient.



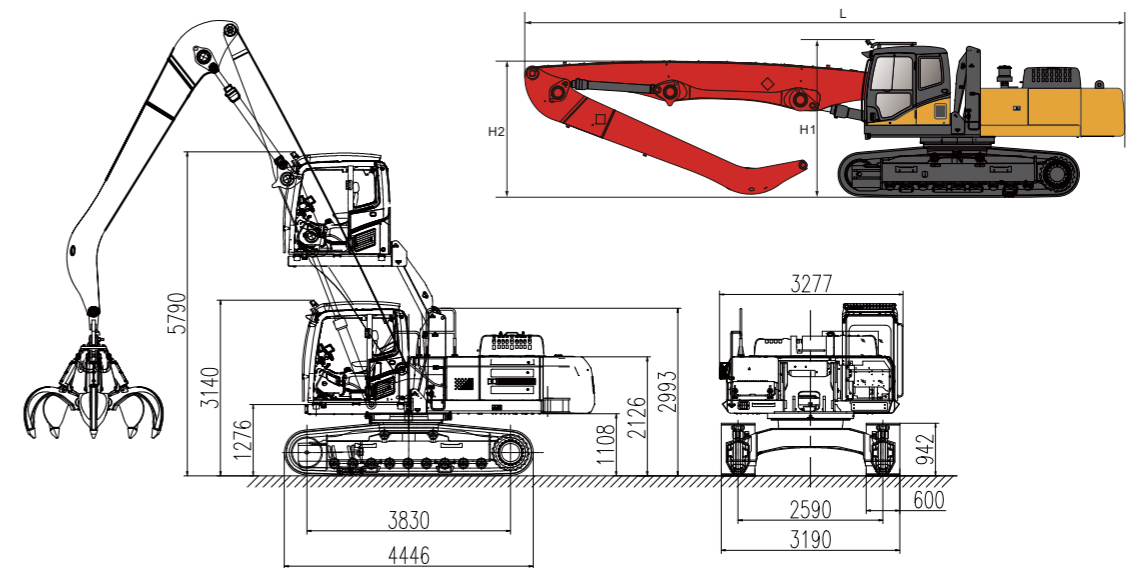
## CONFIGURATION PARAMETER

<b>Power system</b>	<b>Engine</b>	Mode	Mitsubishi D06FRC-TAA
		Maximum power	147kW/2100rpm
		Maximum torque	750Nm/1350rpm
		Emission	CHN III
		Oil tank	465L
<b>Moving system</b>	Working rail span	2590mm	
	Tread width	3830mm	
	Track width	600mm	
	Maximum travel speed	5km/h	
<b>Hydraulic system</b>	Control type	Electronic control positive flow system	
	Main pump	Model	Kawasaki K7V125DTP1N9R-0E05-1V
		Rated flow	2 × 260L/min
	Main valve	Kawasaki KMX15RB/B45217A-V	
	Reducer	Sauter GS14D20C.0	
	Movable boom cylinder	Hengli JSY26.5-DB	
	Stick cylinder	Zhongxing ZX200.3.1B	
	Maximum system pressure	32MPa	
Hydraulic oil tank	230L		
<b>Slewing mechanism</b>	Slewing bearing	Sauter SSF1405/40CWH II	
	Maximum slewing speed	8rpm	
<b>Operation cabin</b>	Lifting height	2650mm	
<b>Operation basic parameters</b>	Boom specification	Maximum working radius	12m
		Maximum working height	10.5m
	Maximum working radius	10.5m	
	Maximum working height	10.5m	
	Maximum working depth	-6m	
	Theoretical load on maximum radius point(including grab)	3.4t	

## WORKING RANGE



## THE DIAGRAM OF DIMENSION



	The length of movable hinge point	The length of stick point	L	H1	H2
Boom combination(standard)	6.8m	5.6m	10.4m	3.14m	2.58m



# SMHC35

SANY 35t Material Handling machine mainly apply to grab and loading or unloading operation for waste steel and bulk, with high efficiency, super high performance, safety and reliability.



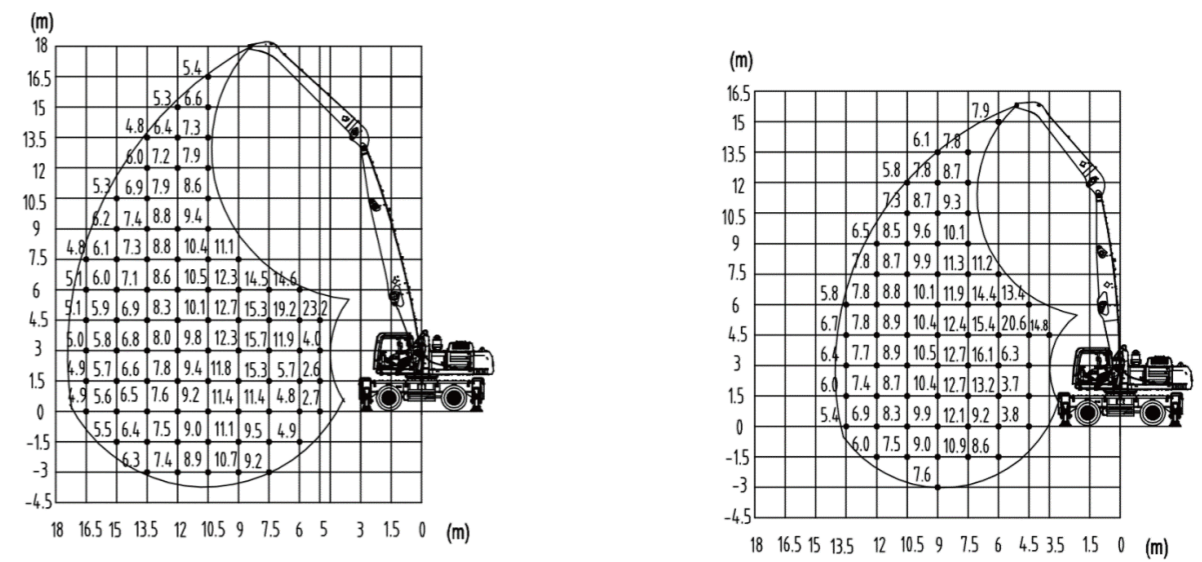




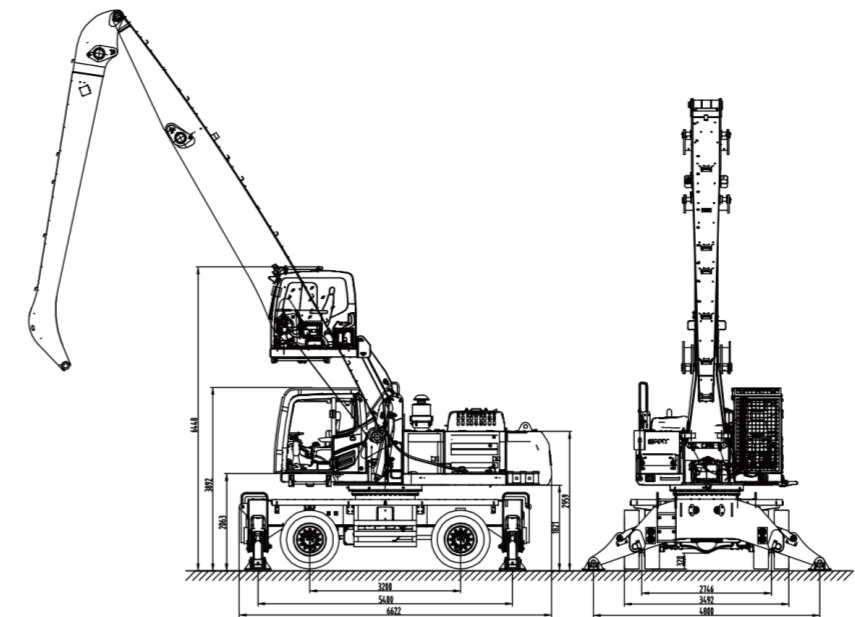
## CONFIGURATION PARAMETER

Power system	Engine	Model	ISUZU 6HK1-XDHAG-01-C3	
		Power	194kW/2200rpm	
		Torque	1135Nm//1350rpm	
		Emission	CHN III	
		Oil tank	600L	
Power system	Tread width	2746mm		
	Wheelbase	3200mm		
	Vertical span	5400mm		
	Horizontal span	4800mm		
	Turning radius	8800mm		
	Maximum travel speed	20km/h		
	Control type	Electronic control positive flow system		
Hydraulic system	Main pump	Main pump	Kawasaki K5V160DTP1X7R-0E40-BV	
		Rated flow	2 × 320L/min	
	Main valve	Kawasaki KMX15RB/B45606-EV1		
	Reducer	Kawasaki M5X180CHB-10A-6RA/265-RG20D25		
	Movable boom cylinder	Zhongxing ZXSMHW40.1.3		
	Stick cylinder	Zhongxing ZXWMHW40.1.4		
	Maximum system pressure	32MPa		
	Hydraulic oil tank	310L		
	Slewing mechanism	Slewing bearing	Kawasaki SSF1405.50CWHII	
		Maximum slewing speed	8rpm	
Operation cabin	Lifting height	2650mm		
Operation basic parameters	Boom specification	14m	18m	
		Movable boom: 8.6m	Movable boom: 10.5m	
		Stick: 6m	Stick: 7.5m	
	Maximum working radius	13.5	16.5	
	Maximum working height	15	16.5	
	Maximum working depth	-3	-3	
Theoretical load on maximum radius point(including grab)	6.7t	5.1t		

## WORKING RANGE



## THE DIAGRAM OF DIMENSION



	The length of movable hinge point	The length of stick point	L	H1	H2
Boom combination 1	8.6m	6m	12.43m	3.878m	3.36m
Boom combination 2	10.5m	7.5m	14.312m	3.881m	3.971m

# SMHW48V

SANY 48V Material Handling machine widely apply to loading and unloading bulk material at railway or river terminals, with various boom combination option to meet different working conditions, wider working range, high efficiency.



## CONFIGURATION PARAMETER

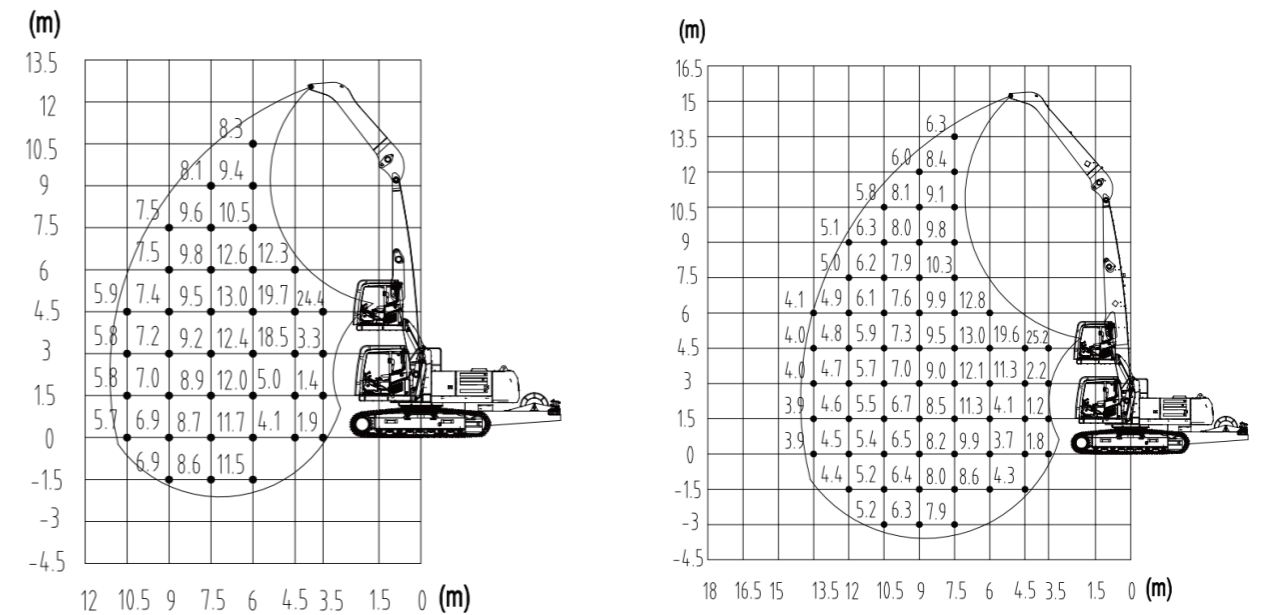
Power system	Motor	Model	Chang Diantou	
		Rated power	160kW/1480rpm	
		Voltage	380V, 50Hz	
		Start type	Soft Start	
Moving system	Working rail span		2590mm	
	Tread width		4140mm	
	Track width		600mm	
	Maximum travel speed		5km/h	
Hydraulic system	Control type		Electronic control positive flow system	
	Main pump	Mode	Kawasaki K5V200DTH1X5R-OE30-BV	
		Rated flow	2 x 297L/min	
	Main valve		Kawasaki KMX15RB/B45606-EV1	
	Reducer		Kawasaki M5X180CHB-10A-6RA/265-RG20D25	
	Movable boom cylinder		Zhongxing ZXSMHW40.1.3	
	Stick cylinder		Zhongxing ZXWMHW40.1.4	
	Maximum system pressure		32MPa	
Hydraulic oil tank		310L		
Slewing mechanism	Slewing bearing		Sauter SSF1405.50CWHII	
Maximum slewing speed		8rpm		
Operation cabin	Lifting height		2650mm	
Operation basic parameters	Boom specification	11m	14m	
		Movable boom:7m	Movable boom:8.6m	
	Stick:4.5m	Stick:6m		
	Maximum working radius	10.5m	13.5m	
	Maximum working height	12m	15m	
Maximum working depth	-1.5m	-3m		
Theoretical load on maximum radius point(including grab)		5.9t	4.1t	

# SMHC50V-D

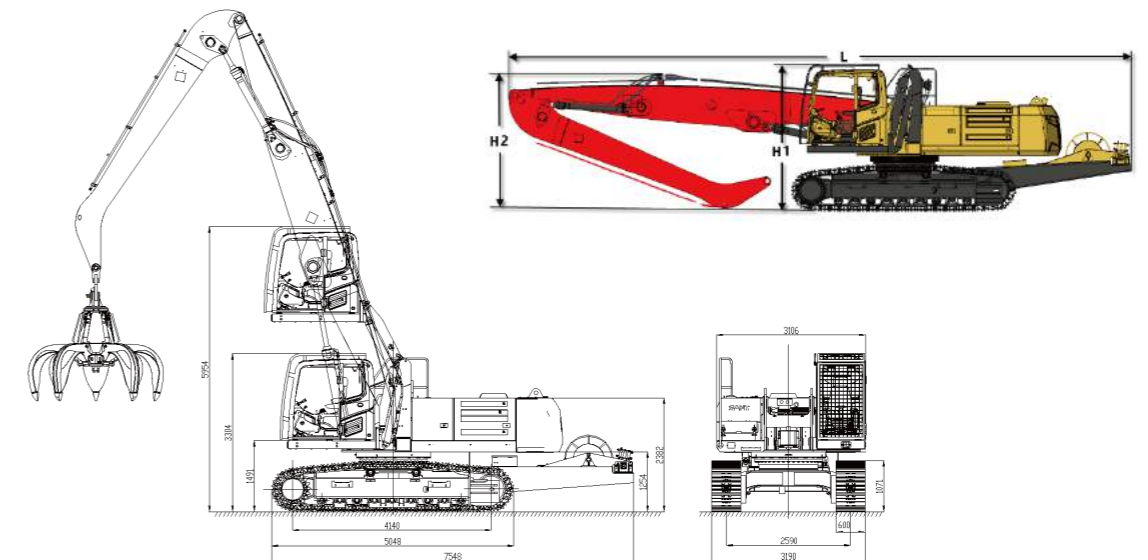
SANY 50V-D Material Handler is pure electric machine. Equipped with different grabs to apply to the loading and unloading of bulk materials and waste steel. Driving by motor, zero exhaust, more environmental and saving 50% cost comparing internal combustion engine machine.

11/12

## WORKING RANGE



## THE DIAGRAM OF DIMENSION



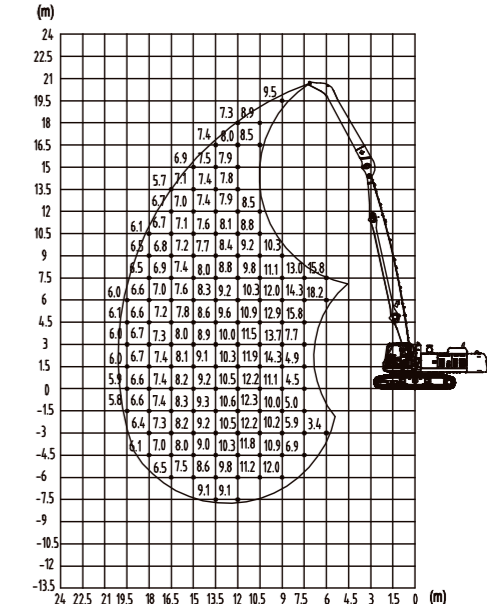
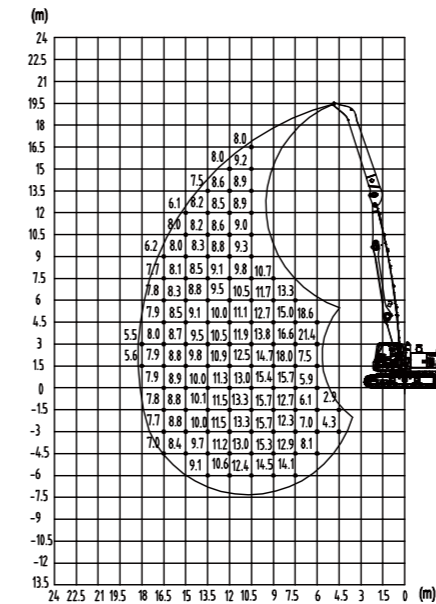
	The length of movable hinge point	The length of stick point	L	H1	H2
Boom combination 1	7m	4.5m	10.8m	3.31m	2.79m
Boom combination 2	8.6m	6m	12.75m	3.31m	2.84m

QUALITY CHANGES THE WORLD.

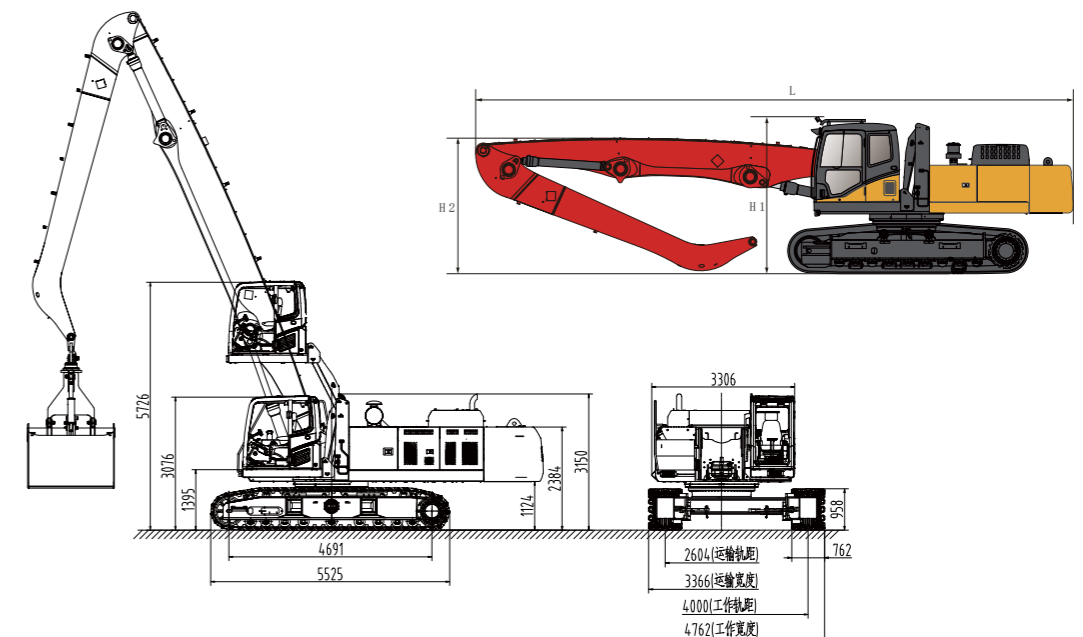
## CONFIGURATION PARAMETER

Power system	Engine	Mode	CUMMINS QSL8.9-C360-30		
		Maximum power	264kW/2100rpm		
		Maximum torque	1500N.m/1500rpm		
		Emission	CHN III		
	Motor	Oil tank	600L		
		Model	Chang Diantou Y250-380-407		
		Rated power	250kW/1490rpm		
Moving system	Working rail span	Rated power	380V/50Hz		
		Start type	Soft starting		
		Working rail span	4000mm		
		Tread width	4691mm		
	Track width	762mm			
		Maximum travel speed	3km/h		
	Hydraulic system	Control type	Electronic control positive flow system		
		Main pump	Rated flow	Working with engine :2 × 390L/min	
				Working with motor:2 × 417L/min	
		Main valve	Park M02560PH-A		
Reducer		Kawasaki M5X250CHB-10A-15A/275-RG27D25E			
Movable boom cylinder		Zhongxing ZXSMHC70.8.3.1			
Stick cylinder		Zhongxing ZXSMHW40.1.3			
Slewing mechanism	Maximum system pressure	34.3MPa			
	Hydraulic oil tank	500L			
Operation cabin	Slewing bearing	Sauter SSf1530/60CWHV			
	Maximum slewing speed	8rpm			
Operation basic parameters	Lifting height	2650mm			
	Boom specification	18m	20m		
		Movable boom:10.5m	Movable boom:12.5m		
	Stick:7.5m	Stick:7.5m			
		Maximum working radius	18m	19.5m	
	Maximum working height	18m	20m		
	Maximum working depth	-7m	-7.5m		
	Theoretical load on maximum radius point(including grab)	6t	6t		

## WORKING RANGE



## THE DIAGRAM OF DIMENSION



	The length of movable hinge point	The length of stick point	L	H1	H2
Boom combination 1	10.5m	7.5m	15300	3140	6800
Boom combination 2	12.5m	7.5m	17560	3140	6230

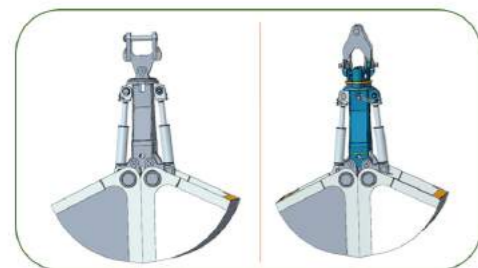
# SMHC70

Sany 70t Material Handling machine equips with dual powers, mainly apply to bulk materials loading and unloading in river terminals. It has big double shell grab and various boom combination, working wider range, high efficiency, unloading completely.



# OPTIONAL ATTACHMENTS

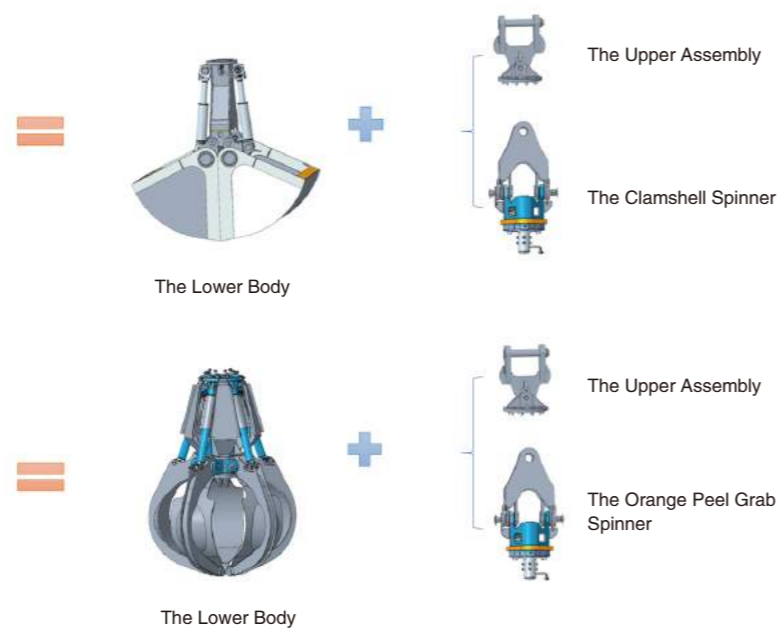
## Modular Design



Non-Spin Clamshell Grab      Auto-Spin Clamshell Grab



Non-Spin Orange Peel Grab      Auto-Spin Orange Peel Grab



## TECHNICAL PARAMETER

Technical Parameter		2.0m <sup>3</sup>	2.5m <sup>3</sup>	3.5m <sup>3</sup>	4m <sup>3</sup>	5m <sup>3</sup>
Grab Capacity ( m <sup>3</sup> )		2	2.5	3.5	4	5
Weight	With Spinner ( Kg )	2216	2404	2566	2752	2924
	Without Spinner ( kg )	1888	2090	2243	2318	2795
Length ( mm )		1500	1602	1804	2000	2000
Open Width ( mm )		2470	2865	3112	2918	3228
Close Width ( mm )		2218	2298	2668	2696	2595
Height (with spinner)(mm)		3270	3468	3597	3652	3629
Height (without spinner)(mm)		3006	3204	3333	3234	3458
Working Pressure ( MPa )		28MPa	28MPa	28MPa	28MPa	28MPa

## TECHNICAL PARAMETER

The Orange Peel Grab		0.8m <sup>3</sup>	1m <sup>3</sup>
Grab Capacity ( m <sup>3</sup> )		0.8	1
Weight	Without Spinner ( kg )	1902	1952
	Without Spinner ( kg )	1675	1725
Open Width ( mm )		2550	2933
Close Width ( mm )		1625	1822
Height (with spinner)(mm)		3093	3286
Height (without spinner)(mm)		2829	3022
Working Pressure ( MPa )		25	25



## TECHNICAL PARAMETER

The Log Grab	
The Looping Area ( m <sup>2</sup> )	2
Weight (with spinner) kg	2211
The Open Looping Width ( mm )	3251
The Close Looping Width ( mm )	1638
Height/Length ( mm )	4028/810
Working Pressure ( MPa )	28





# OPTIONAL ATTACHMENTS

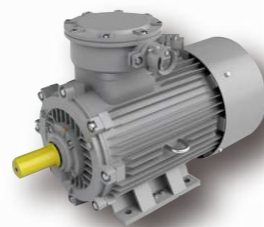
Electromagnetic Chuck



Composition System



Control Cabinet

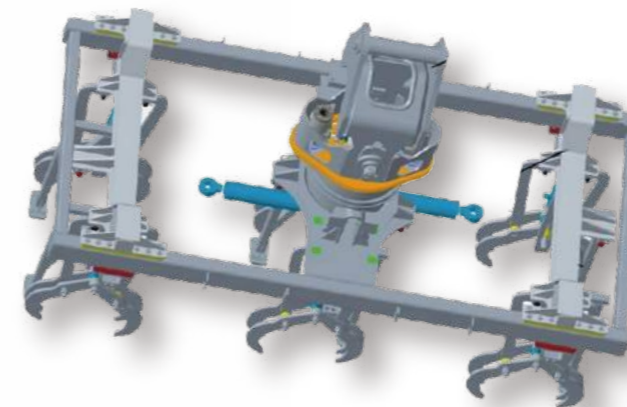


Electric Generator



Hydraulic Motor

The Pulp Grab



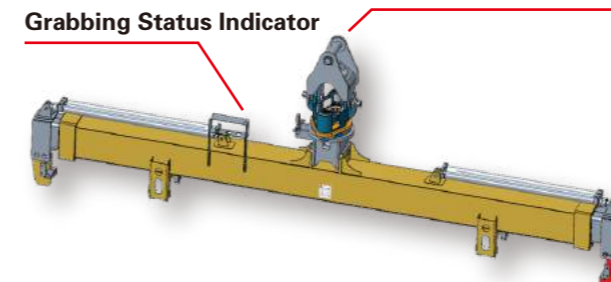
## TECHNICAL PARAMETER

Item	Parameters
Rated Capacity	6t
Max. Spin Speed	10r/min
Hook Open/Close Time	<1s
Rated Working Pressure	25MPa
Spreader Length	2600mm
Spreader Width	1300mm
Spreader Height	2150mm
Hook Range	840-2000mm
Spreader Weight	1.5t

## TECHNICAL PARAMETER

Function	Parameters	Model		
		WM5-110L	WM5-130L	WM5-160L
Electromagnet	Rated Voltage DC	220V	220V	220V
	Input Power (kW)	8.14	13.4	17.8
	Diameter (m)	1.1	1.3	1.6
	Weight (kg)	appr.1310	appr.2100	appr.3050
	The Cold Current A	37	60.9	81
	Level of Protection	IP67	IP67	IP67
	Insulation Grade	Level H	Level H	Level H
	Cast Iron Ingot (kg)	800	1100	2300
	Cutting Bits (kg)	800	1100	2300
	No.1 Steel Scrap (kg)	400	600	1100
	No.2 Steel Scrap (kg)	100	200	400
Connection Way	Chain	Chain	Chain	
Electromagnet Line	YC2x10	YC2x16	YC2x16	
Generator Set	Power (kW)	15	15	15
Control Cabinet	Model	ZKZL-19E-D		
	Dimension	520x350x750mm (L x W x H)		
	Output Power	19kW		
	Input Voltage	AC380V		
	Output Voltage	DC220V		
	Level of Protection	IP45		
	Charing/Demagnetization Time	≤3s		

Steel Pipe Grab



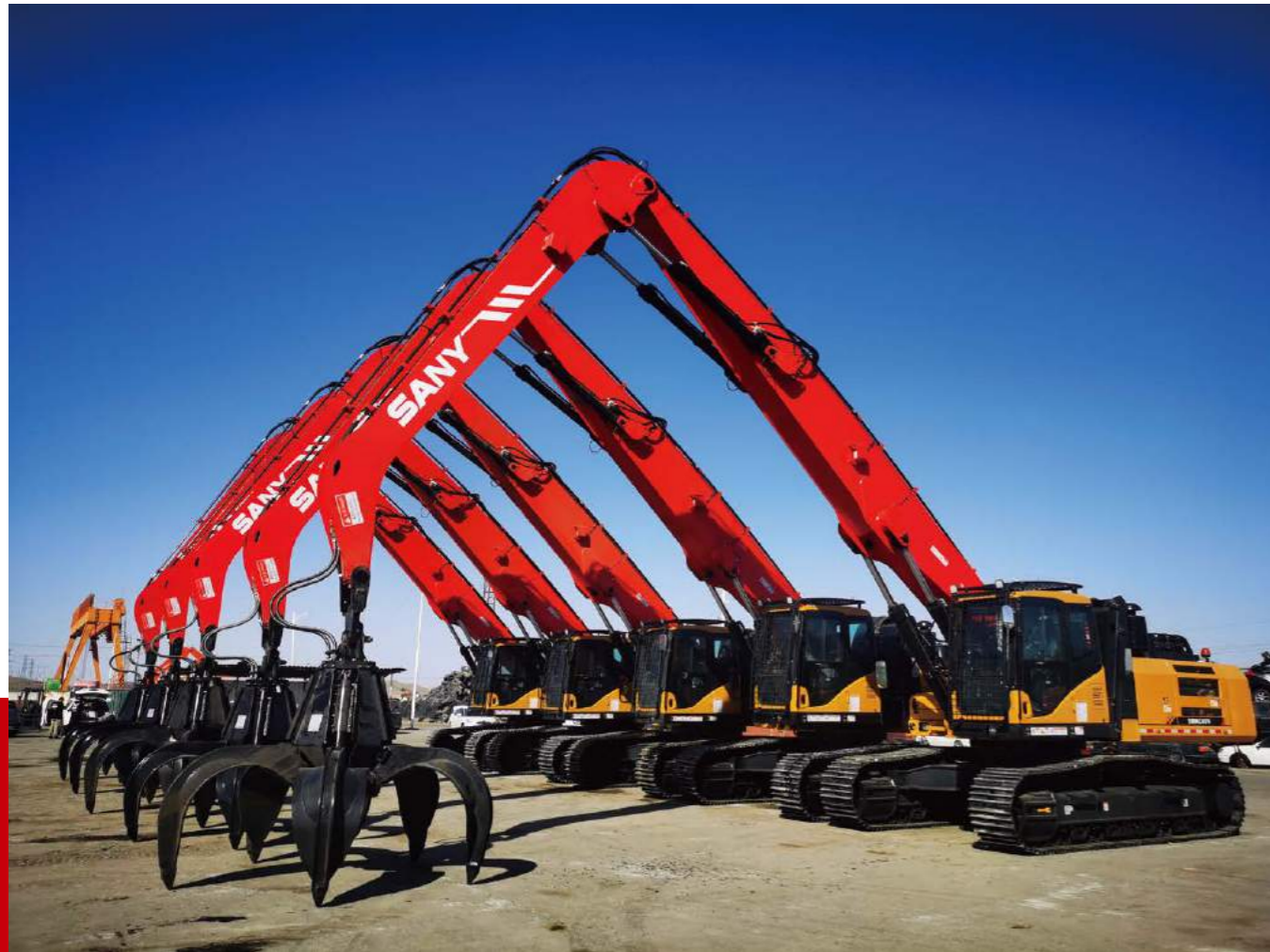
## TECHNICAL PARAMETER

Item	Parameters
Rated Capacity	8t
Max. Rotation Speed	10r/min
Rated Working Pressure	25MPa
Telescopic Distance	One Side 1420mm
Move Distance	Left/Right Side 360mm
Steel Pipe Length	6m-8.5m
Spreader Weight	2.5t



# SUCCESSFUL CASES

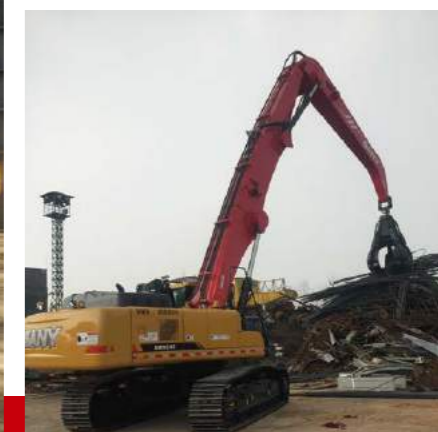
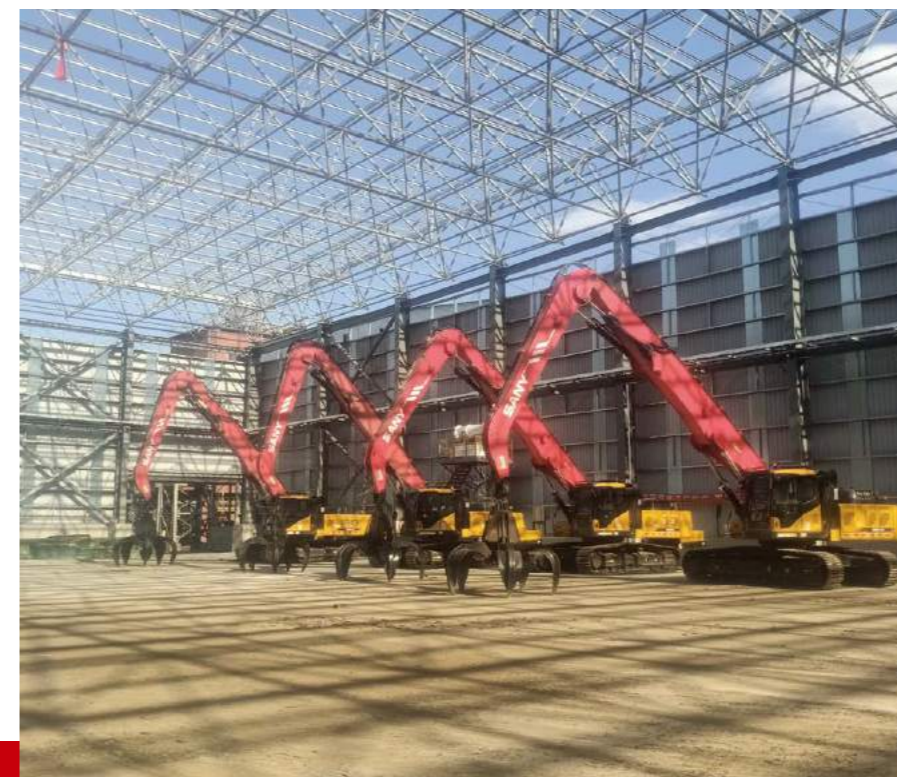
## Metal Recycling Sites





# SUCCESSFUL CASES

## Metal Recycling Sites





# SUCCESSFUL CASES

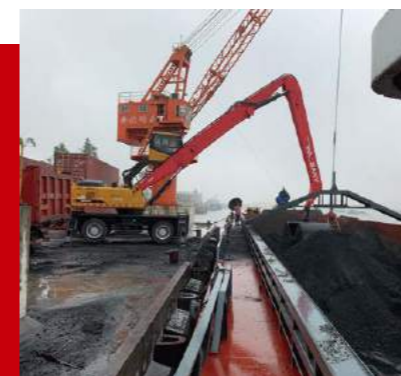
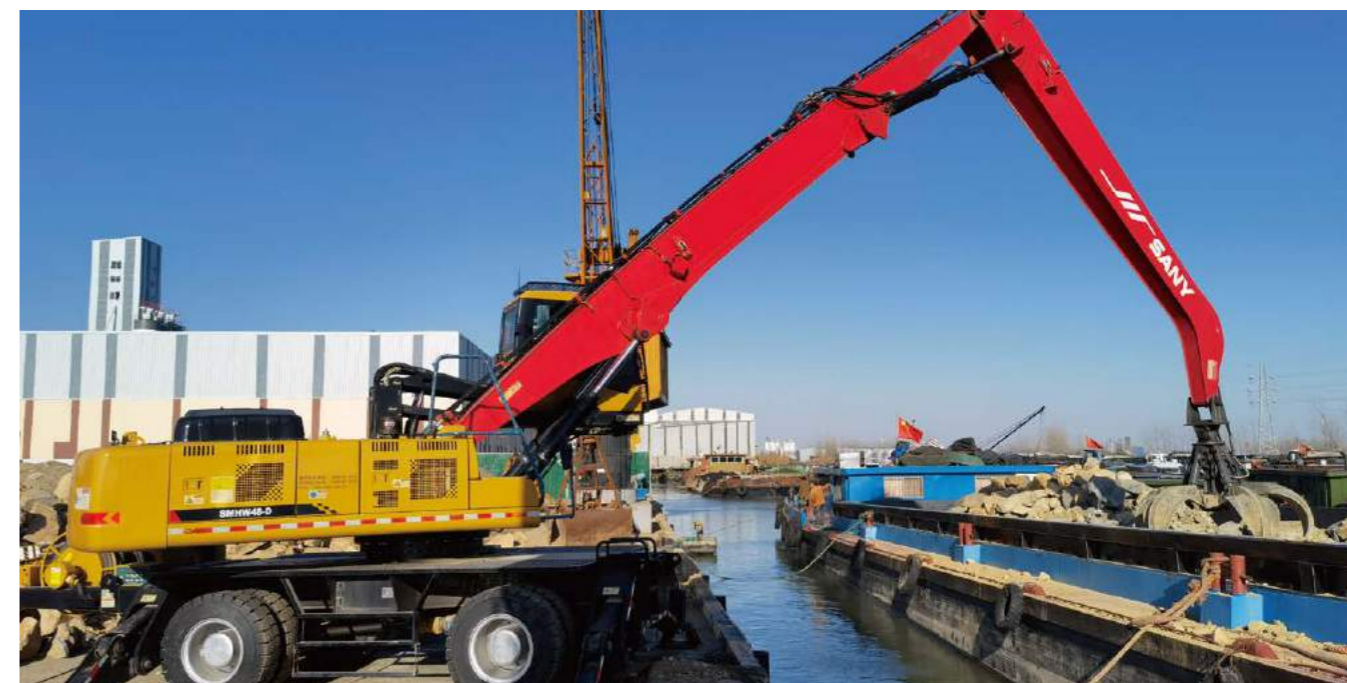
## Railways





# SUCCESSFUL CASES

## Inland Terminals





# SUCCESSFUL CASES

## Bulk Cargoes





# CAREFREE SERVICE



SERVICE HOTLINE: **400 887 8318**

## Service Vision:

Exceed customer expectation and industry standards.

## Service Mission:

All for client, create value for customer

## Service Commitment in China:

- (1) Reply customer within 15 minutes.
- (2) Reach main service area within 2 hours.
- (3) Solve general problems and provide regular parts within one day.
- (4) Solve customer complaints with twodays.
- (5) Solve all issues within 7 days.

## Service Value:

Innovation、Excellence、Clients、Cooperation、  
Respect、Passion、Honesty、Responsibility

## Service Advantages:

“Professional service power” : SANY has offices in over 200 countries and regions, with 11 subsidiaries and 35 service points in domestic together. Setting up the parts warehouse can cover the world range, Forming the four in one of parts supply and guarantee system by headquarters warehouse, regional center warehouse, provincial and prefecture-level city, Accommodating 80000 kinds of parts to ensure fully customer service requirements in time.

“Professional operation and maintenance system” : SANY has invested tens of million of RMB to build “SANY Customer cloud APP” ,which enable customers to monitor the running status and parameters of the equipment in real time anywhere in the world. In addition, it provides online consultation, community communication, accessories mall, one-click repair, maintenance reservation, product knowledge learning and other value-added service. So the customer can easily enjoy the highest quality of service in any place of the world.